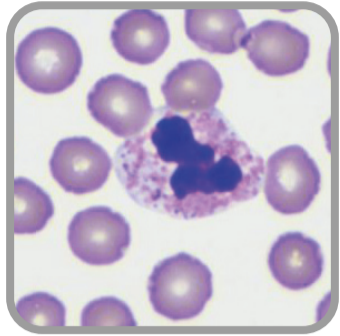
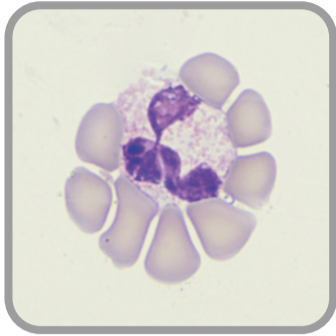


Haematology LABOKLIN

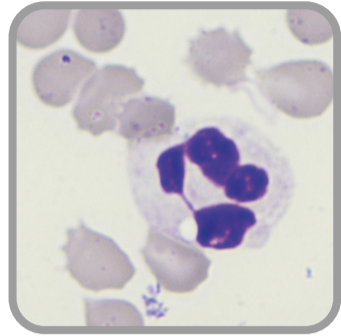
Small Mammals



Segmented heterophil rabbit



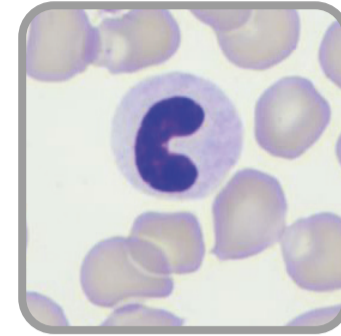
Segmented heterophil guinea pig



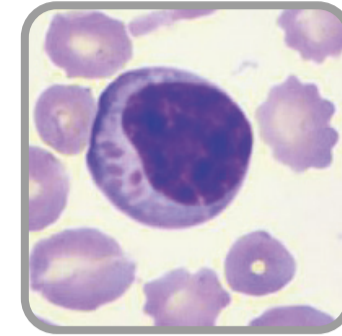
Segmented neutrophil ferret



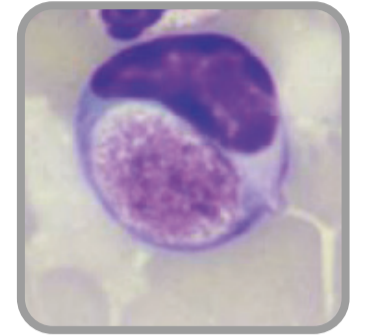
Sites for venipuncture, guinea pig:
Left: lateral saphenous vein
Right: cephalic vein



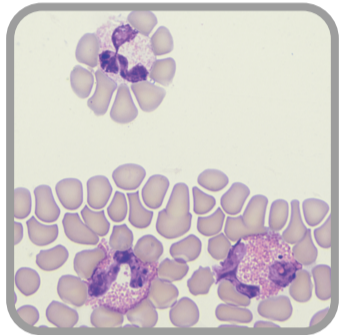
Band neutrophil ferret



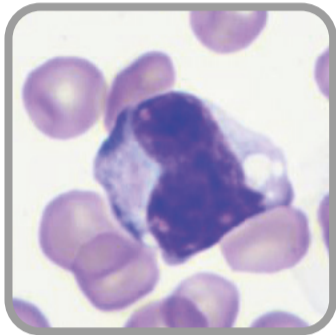
„Large granular lymphocyte“ guinea pig



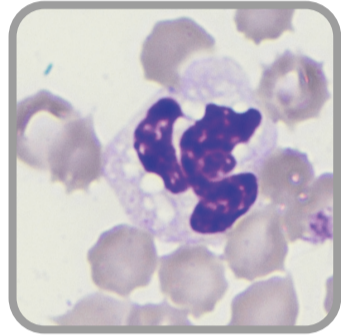
Lymphocyte with a Kurloff body guinea pig



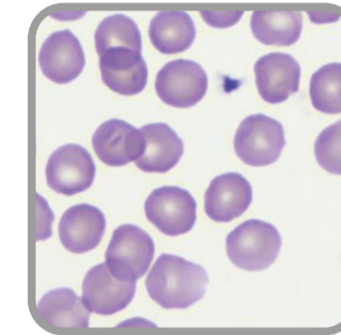
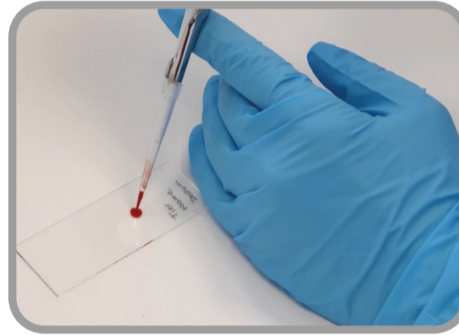
Heterophil (top), eosinophils (bottom) guinea pig



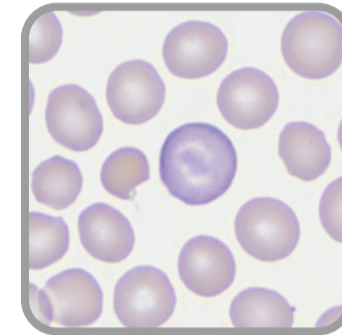
Activated monocyte rabbit



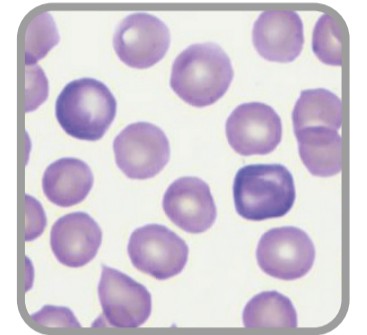
Monocyte ferret



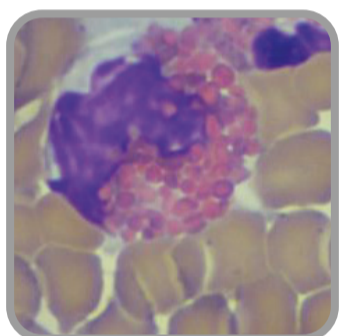
Normal erythrocytes rabbit



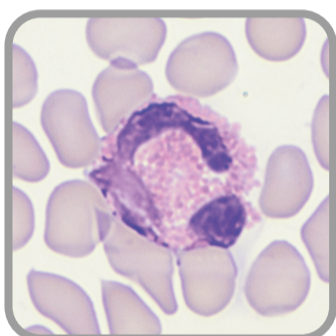
Anisocytosis, polychromasia rabbit



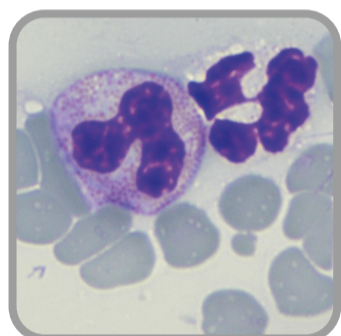
Polychromasia rabbit



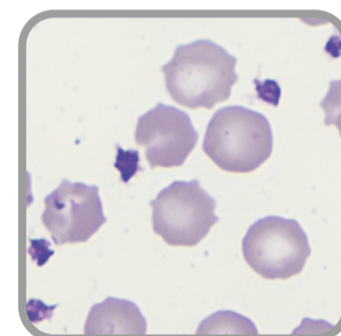
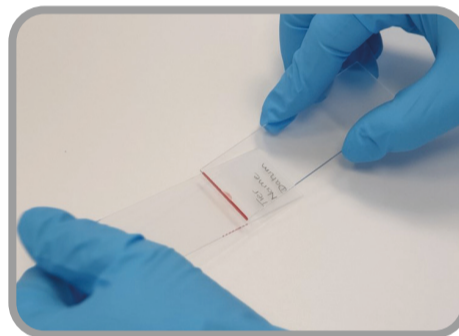
Eosinophil rabbit



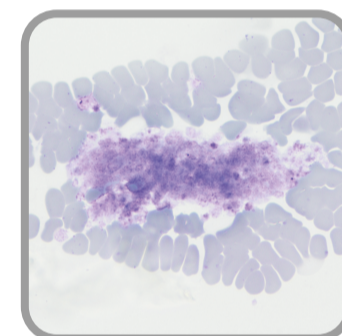
Eosinophil guinea pig



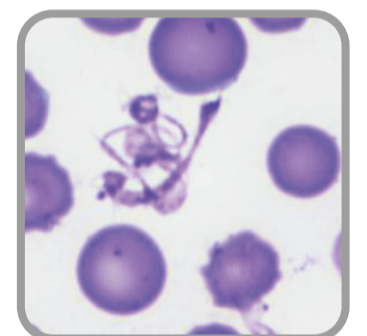
Eosinophil ferret



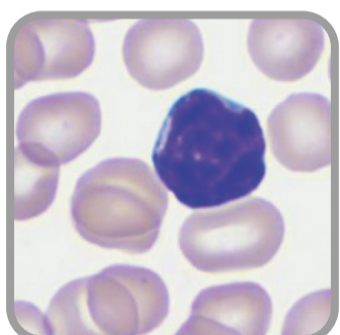
Platelets ferret



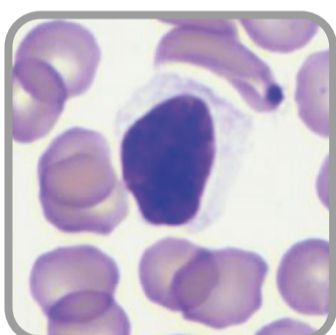
Platelet clumping ferret



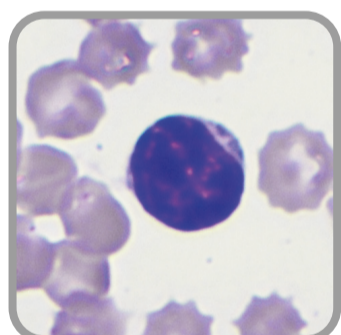
Atypical platelets guinea pig



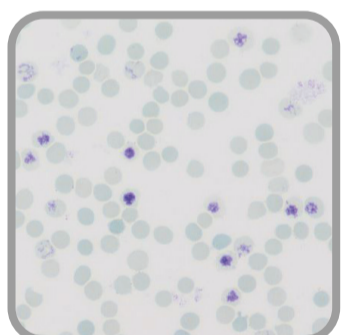
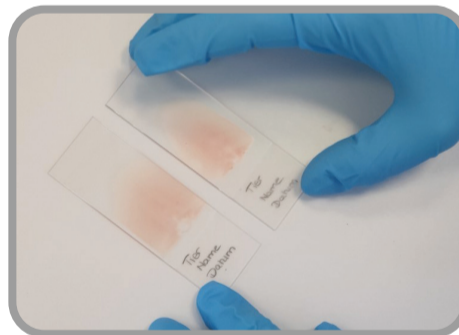
Small normal lymphocyte guinea pig



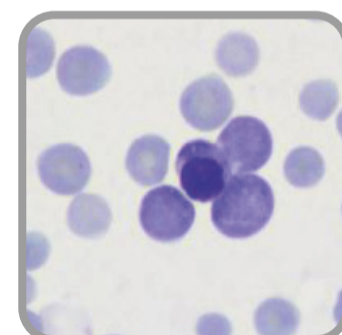
Small reactive lymphocyte rabbit



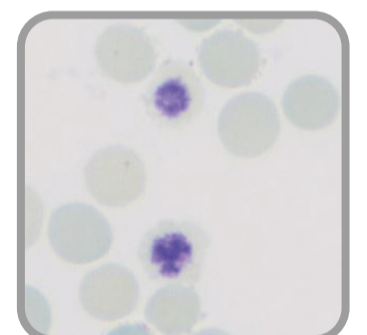
Normal lymphocyte ferret



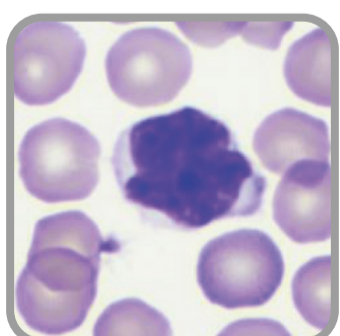
Reticulocytes low magnification rabbit



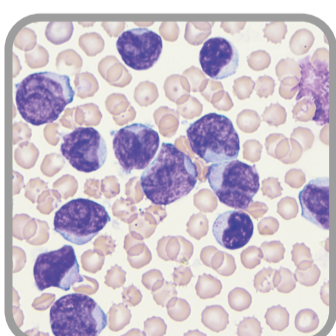
Rubricyte rabbit



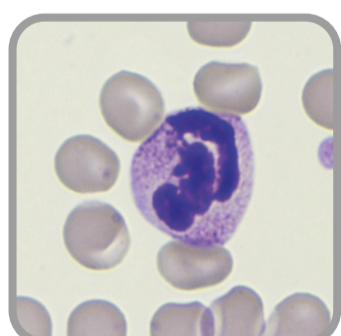
Reticulocytes group I rabbit



Atypical, likely reactive, lymphocyte with indented nuclei rabbit



Stage V lymphoma, large, atypical neoplastic lymphocytes guinea pig

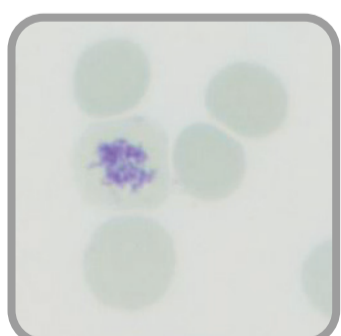


Basophil guinea pig

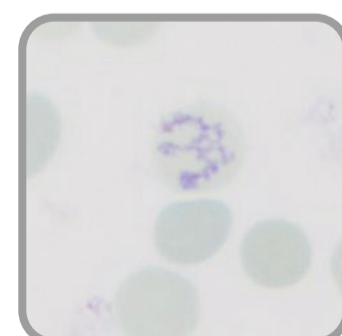


blood smear

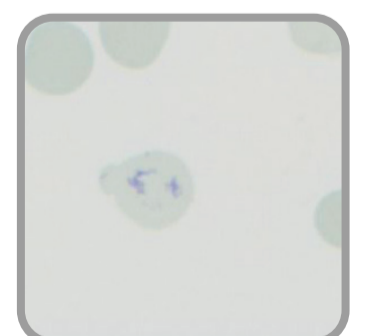
staining process



Reticulocytes group II rabbit



Reticulocytes group III rabbit



Reticulocytes Group IV rabbit

www.laboklin.com

As of: November 2019

D-97688 Bad Kissingen • Steubenstraße 4
Tel. +49-971/7 20 20 • Fax +49-971/6 85 46
E-mail: info@laboklin.com • www.laboklin.com

