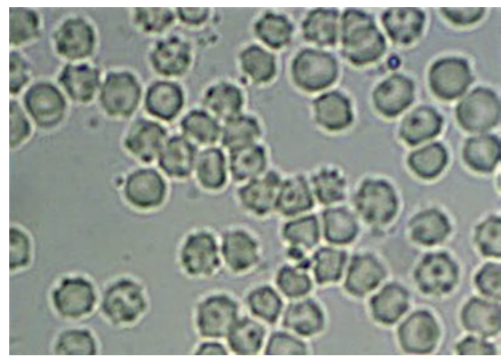
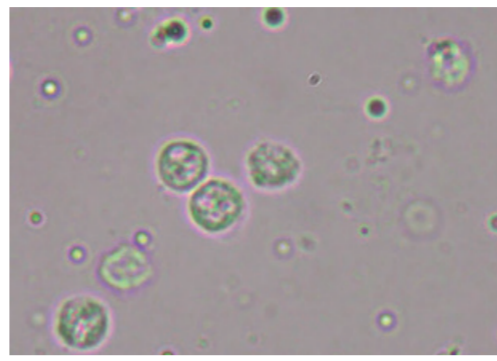


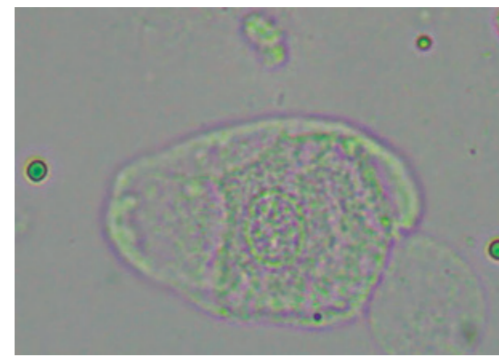
Erythrocytes



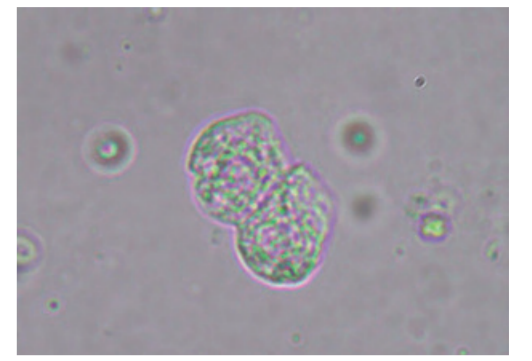
Acanthocytes



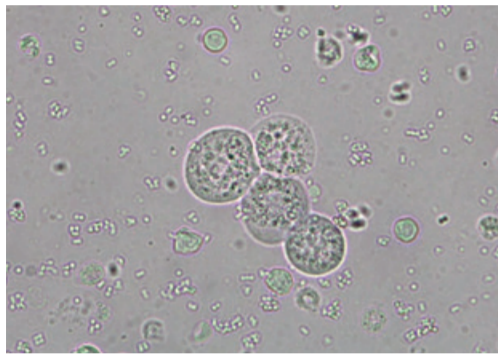
Leukocytes



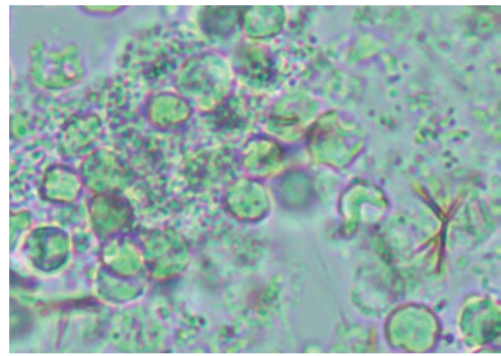
Squamous epithelial cell



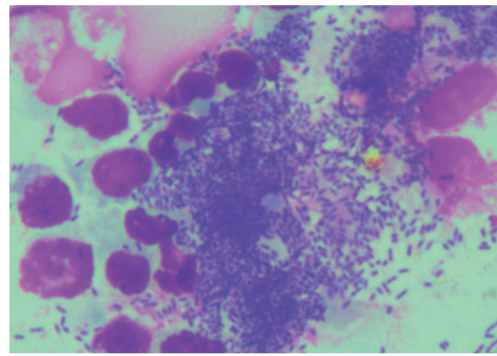
Transitional epithelial cells



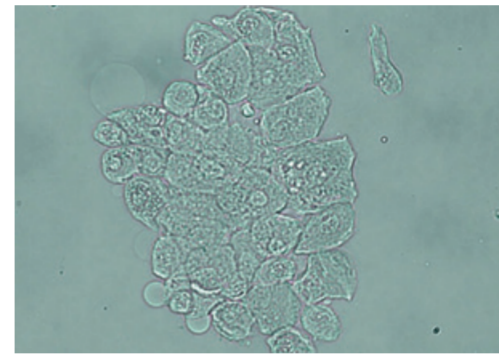
Epithelial cells, leukocytes, and bacteria



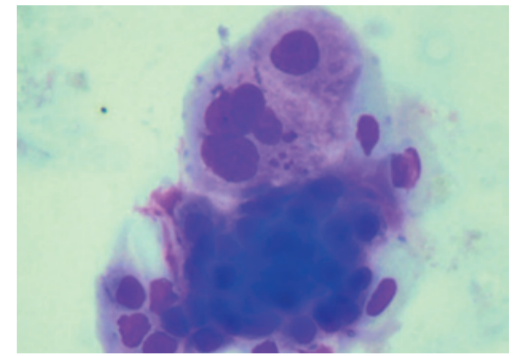
Leukocytes, bacteria, and bilirubin crystals - unstained



Leukocytes, bacteria, and bilirubin crystals - stained



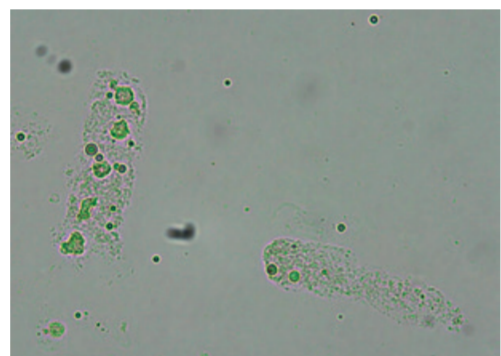
Conglomeration of desquamated epithelial cells - unstained



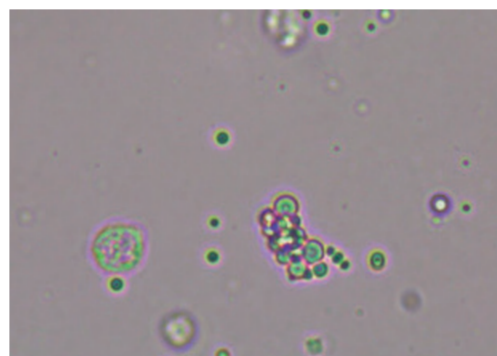
Conglomeration of desquamated epithelial cells - stained: bladder cancer



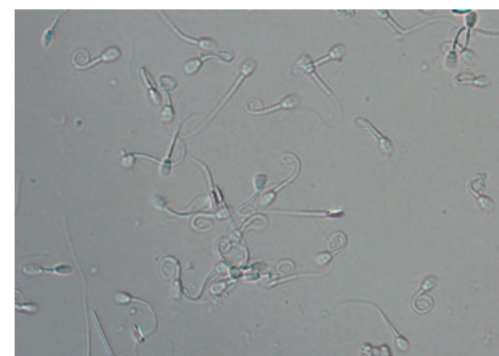
Granular cast



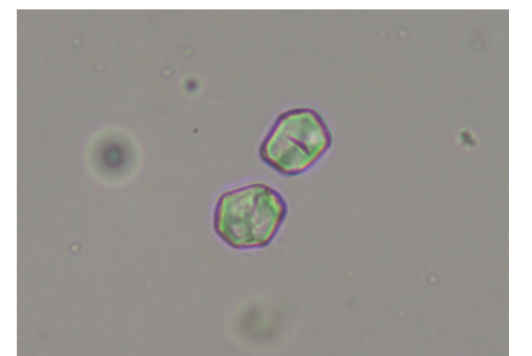
Hyaline cast with fat droplets



A leukocyte and fat droplets

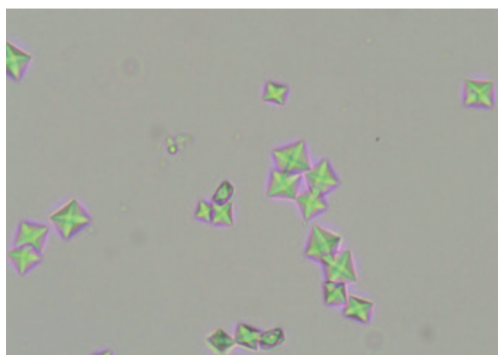


Sperm

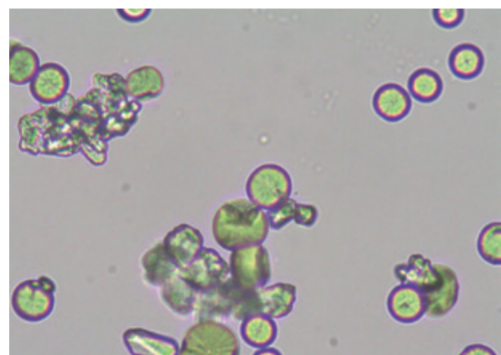


Starch granules

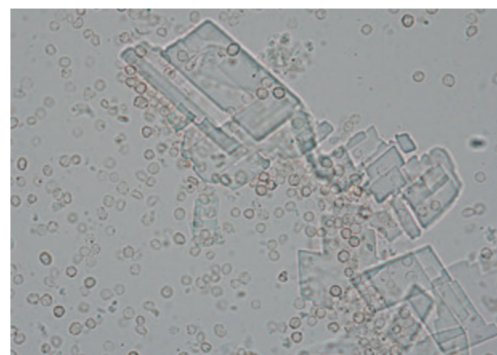
## Urine Sediment



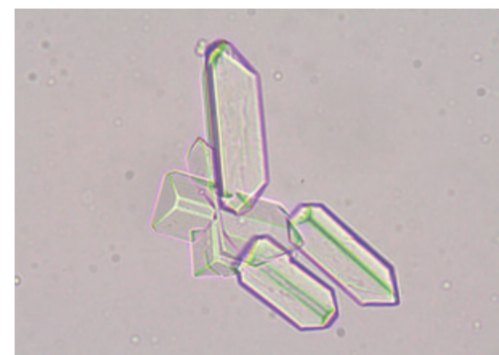
Calcium oxalate



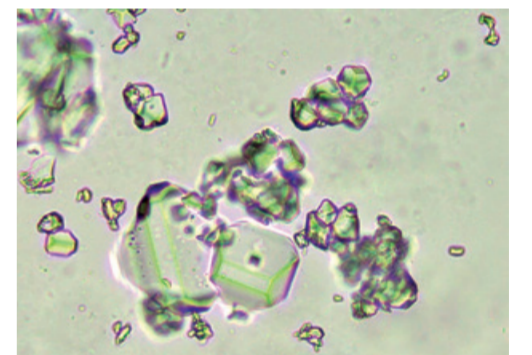
Calcium carbonate



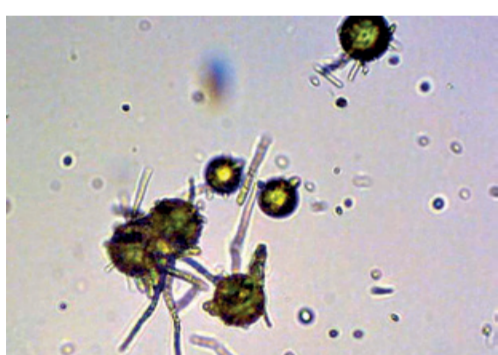
Cholesterol crystals



Struvite crystals



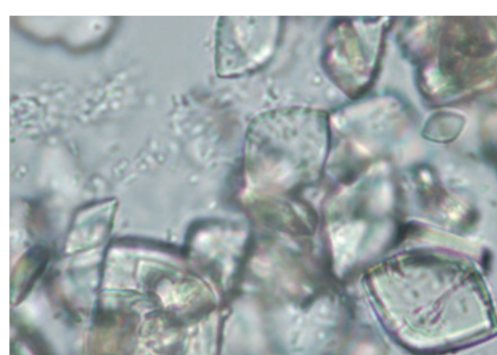
Struvite crystals in dissolution



Ammonium urate



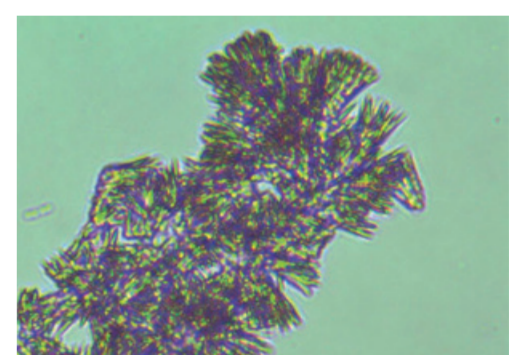
Bilirubin crystals



Uric acid crystals



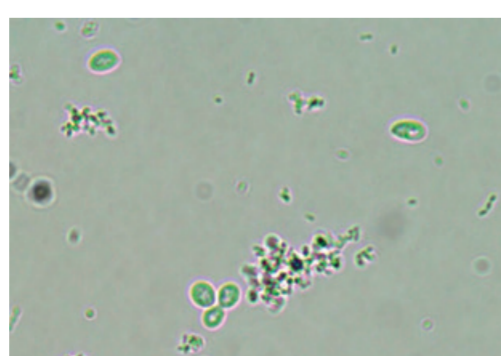
Cystine crystals



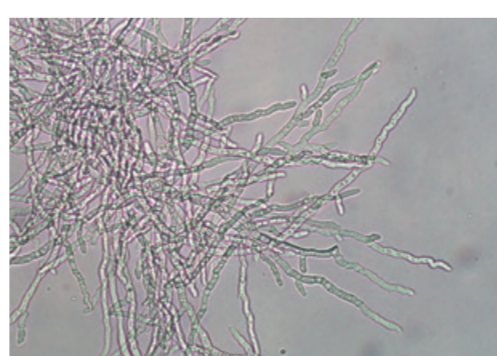
Needle-like crystals - often induced by medication



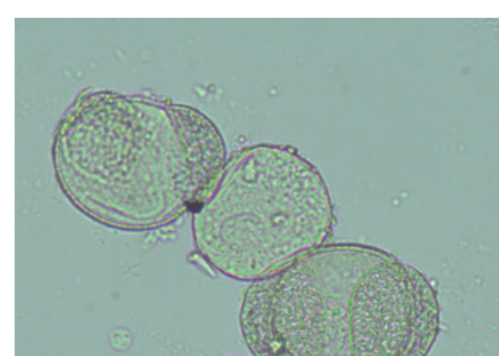
Capillaria plica



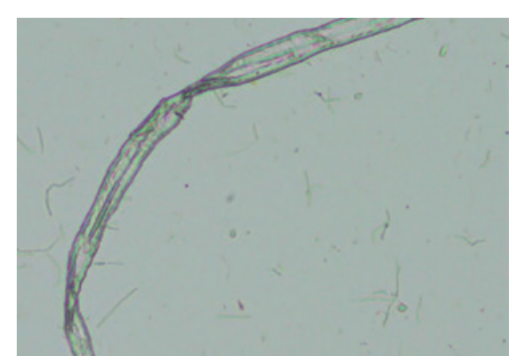
Yeast and bacteria



Fungal hyphae



Pollen grains



Fibre